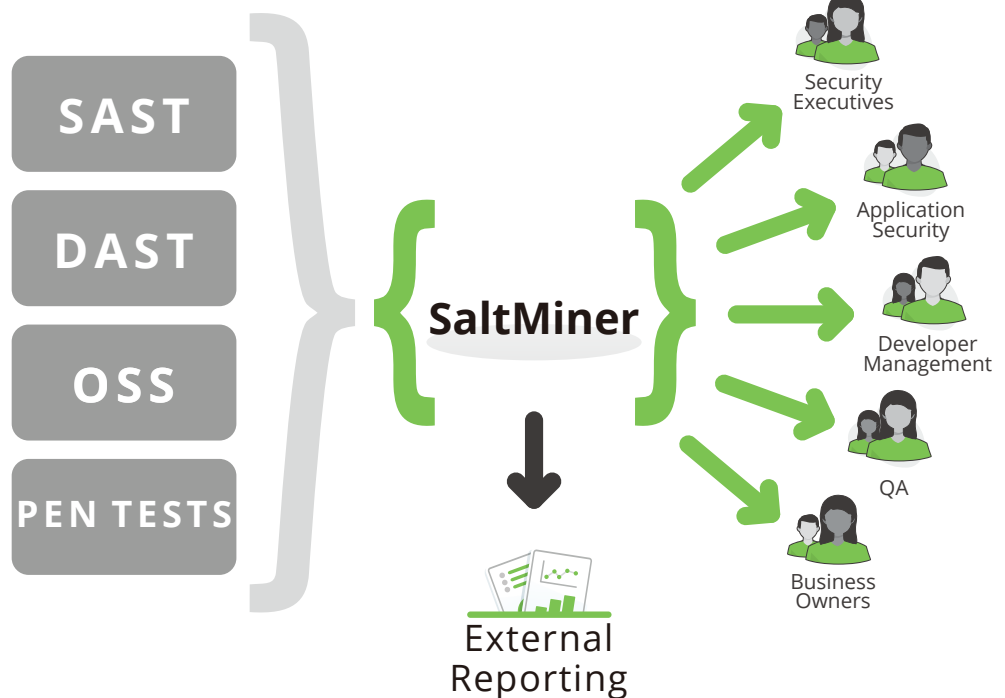


SALTMINER

Saltworks Security's solution for Enterprise Application Security Management.

Regardless of origin, SaltMiner aggregates, standardizes, and reports assessment results into a single pane of glass, providing clarity across the Enterprise which enables you to manage your Application Security program effectively.

- Enterprise dashboards for Application Security across all solutions: SAST, DAST, OSS & Pen Tests
- Business Units can see how they are trending over time to help prioritize and act on vulnerabilities, weekly, monthly, quarterly & yearly
- More efficient & cost-effective than running reports and graphs manually



*In today's complex development landscape, there are numerous security testing tools and methodologies. **Without SaltMiner**, organizations lack a holistic view into the overall security of the application.*

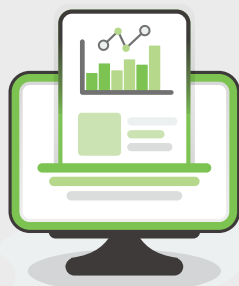
SaltMiner provides the data necessary to manage and assess the success of your Application Security program.



Aggregate

See vulnerabilities across all applications within an entire organization, in a single dashboard view.

Manage thousands of scans and applications, as well as all the testers who interact with them.



Analyze

Filter reports by business unit/owner, vulnerability type, criticality level, vulnerability trends, and more.



Report

Ensure applications are being tested with the right technology at the right time in the right order.

Show trends to prove compliance with results and see how applications are being tested.

